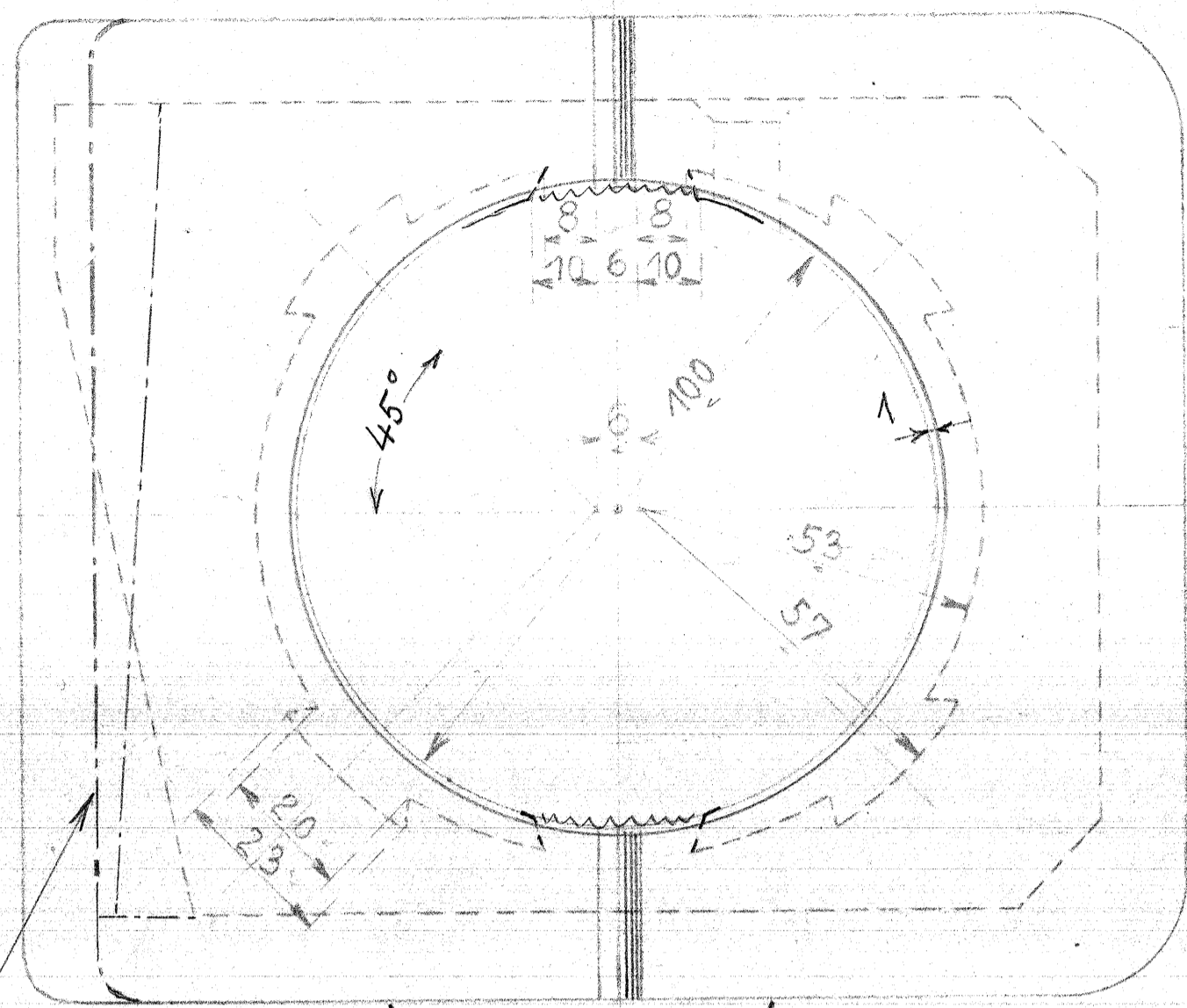


Til Drivstang



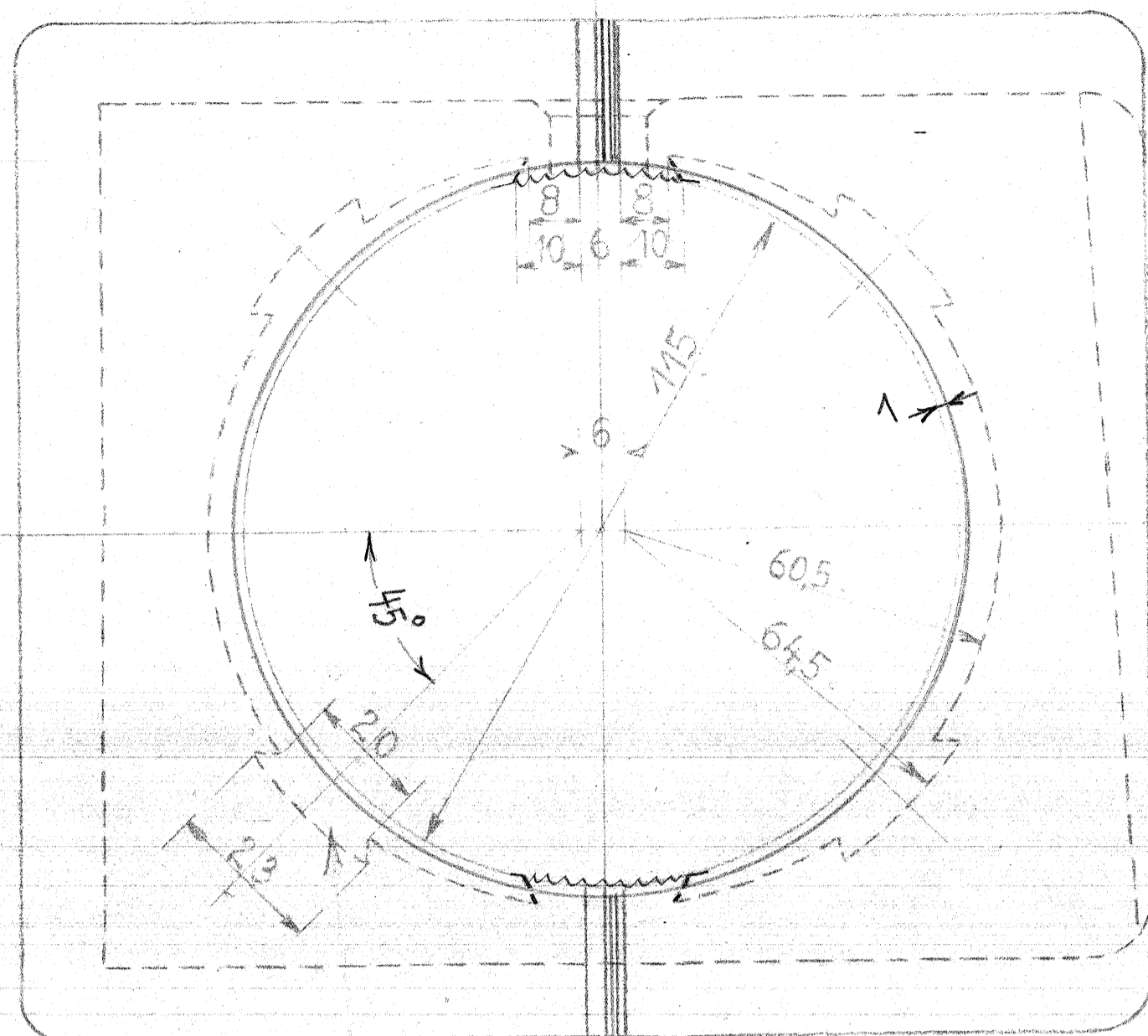
Model N^o 3707y

Model N^o 3677z

Model N^o 3707yc

gælder kun til gamle Stænger efter Tegn. G_{III} 54

Til forreste Kobbelstang

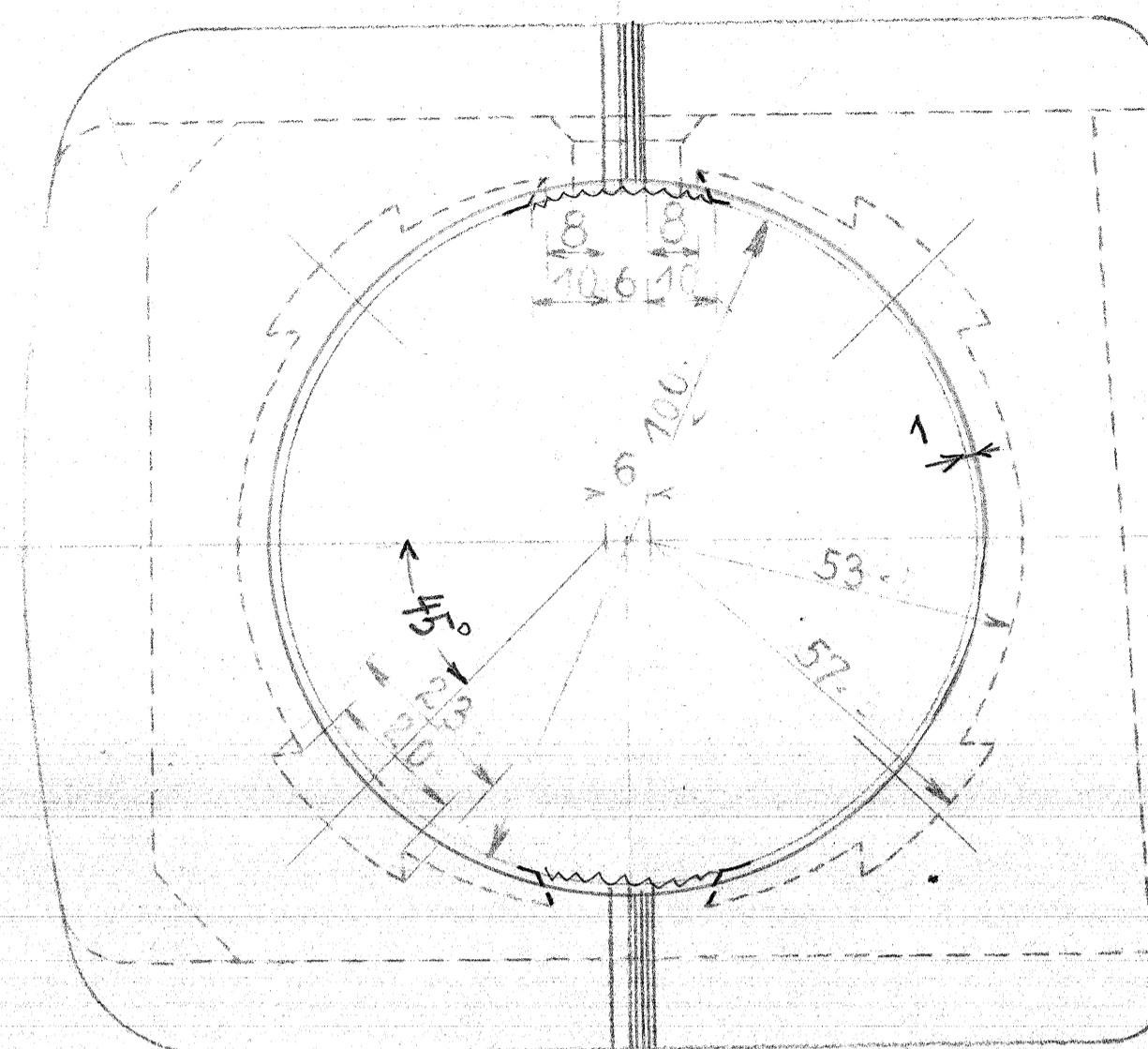


Model N^o 3678z

Model N^o 3679z

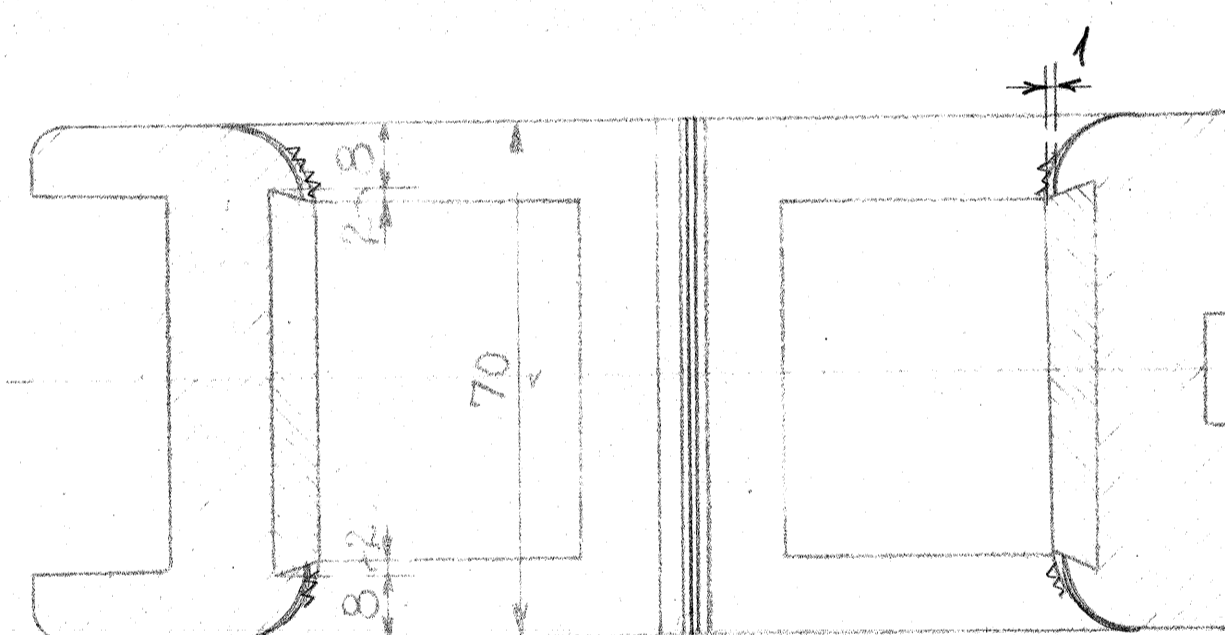
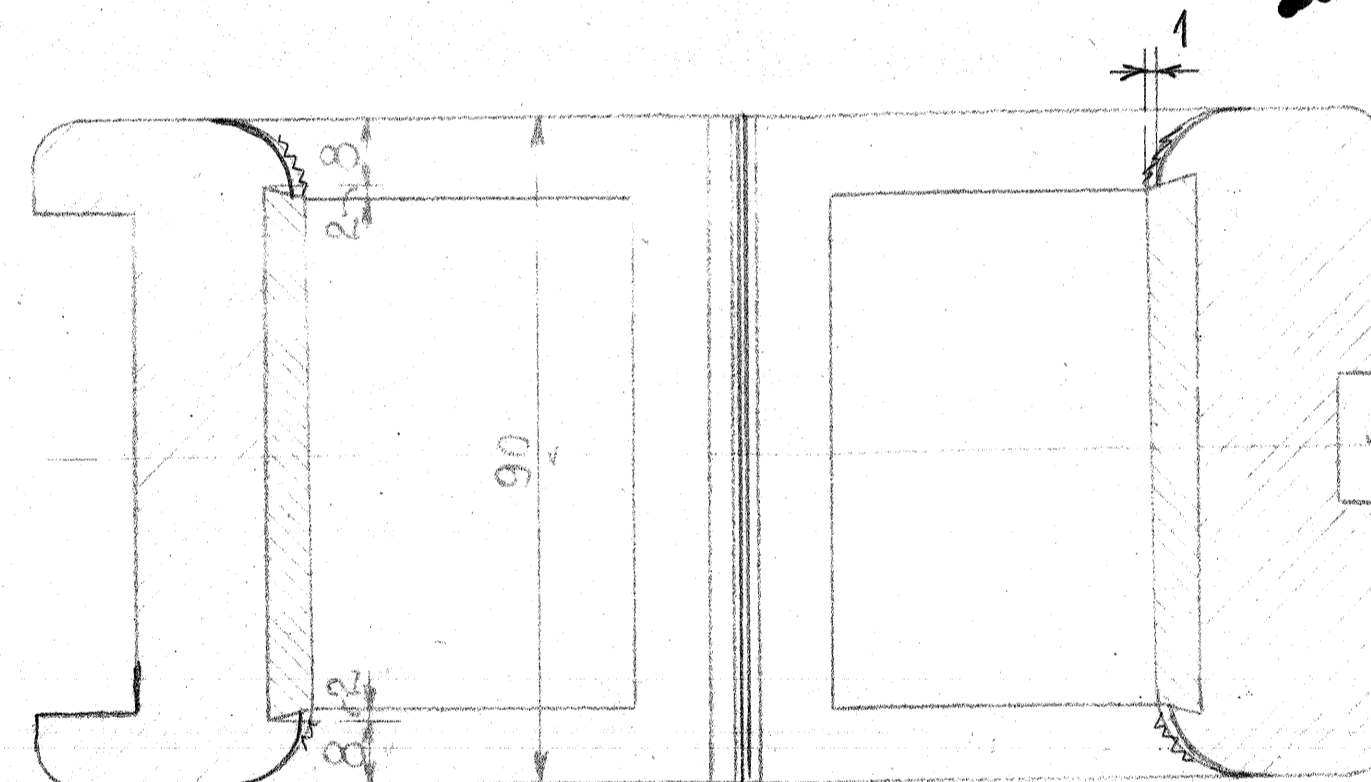
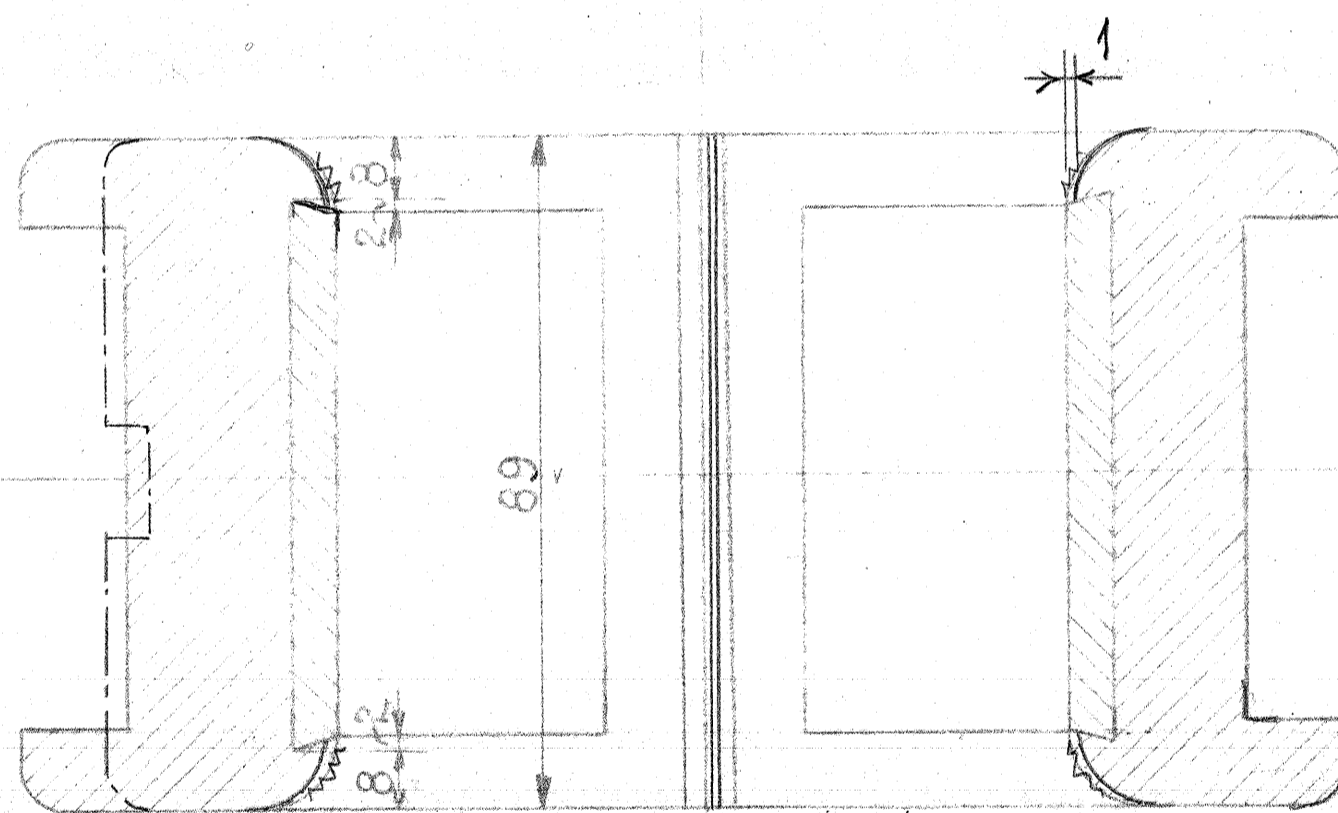
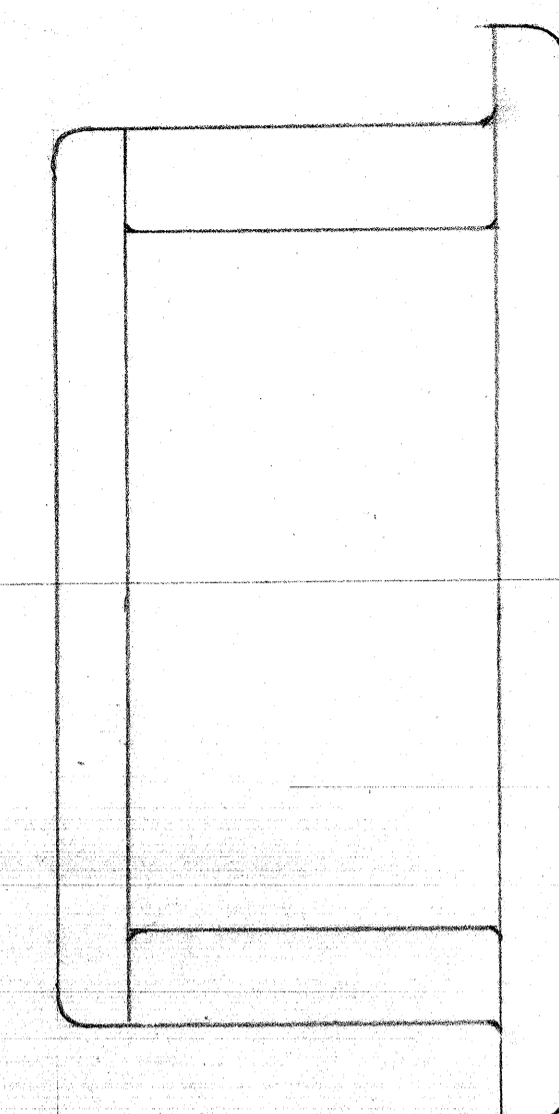
Ribbe i hele det hvide, Metals Bredde

Til forreste og bageste Kobbelstang



Model N^o 3680z

Model N^o 3681z



For øvrige Maal se Tegn. G_{III} 54b, 55 og 56.
endvidere " G_{III} 54 for gamle Stænger.

Forandringer	Dato	Mærke
Bronzen 1mm under det hvide Metal	29/31	V.S.
Endebillede tegnet ind	1/31	V.S.
Kileleje 3707yc forgl. Stænger	21/33	V.S.

lejer
Stangstætte af Bronze
med hvidt Metal

til
Loko-Litra F_{II}, G_{II}.
Kjøl. nr. 10-1-23.

967a

skal i øjeblikket fremstilles
uden hvidmetal. 20. 11.